



能源新发展 合作新未来  
New Energy Development, New Future for Cooperation

# 2025 印尼国际煤炭及 能源工业博览会

## Indonesia Coal and Energy Expo (ICEE)

2025.5.13-17 雅加达国际展览中心JIE expo, Jakarta

### 支持单位

Supported by:

印度尼西亚共和国能源与矿产资源部

The Indonesian Ministry of Energy and Mineral Resources

### 主办单位

Hosted by:

印尼煤炭开采协会

Indonesian Coal Mining Association

印尼矿业服务协会

Indonesian Mining Services Association

中国国家创新与发展战略研究会能源产业研究院

Energy Industry Research Institute of China National  
Innovation and Development Strategy Research Association

世信国际会展集团股份有限公司

Shixin International Exhibition Group Co., Ltd.

### 承办单位

Organized by:

世信国际会展(印尼)有限公司

PT Seesion Exhibition Indonesia

世信朗普国际展览(北京)有限公司

Shixin Lamp International Exhibition (Beijing) Co.Ltd.

### 协办单位

Co-organized by:

印中商务理事会

Indonesia-China Business Council

印中商务中心

Chindo Business Center



# 邀请函

INVITATION

# 展会概况

## Indonesia International Coal and Energy Industry

作为世界上经济增长最快的地区之一，东南亚地区能源需求和煤炭消费持续增长。印度尼西亚是“21世纪海上丝绸之路”的首倡地，也是共建“一带一路”的先行区。同时印尼作为东南亚最大经济体，也是全球主要的煤炭生产和出口国之一，更是中国主要煤炭进口来源国之一。近年来，中印尼关系保持强劲发展势头，开启了共建中印尼命运共同体的新阶段。能源合作尤其煤炭行业在中印尼两国的经贸合作中扮演着重要角色。随着中国与东盟的经贸联系日益紧密，以及中国与印尼在全方位战略合作方面的不断深化的背景下，双方在煤炭能源领域的合作前景将变得极为广阔。

为充分展示印尼和中国两国煤炭能源行业前沿成果、先进技术、尖端装备、优质项目、创新产品等，进一步促进两国煤炭及能源领域的经贸交流合作，推动东南亚地区煤炭及能源行业转型升级，在印度尼西亚共和国能源与矿产资源部支持下，2025印尼国际煤炭及能源工业博览会(以下简称 ICEE 2025)将于2025年5月13-17日在印尼雅加达国际展览中心举办。集中汇聚全球煤炭及能源领域最新发展成果和前沿技术，大型装备以及智能化综合解决方案，为煤炭及能源化工行业搭建一个展示交流、资源共享、高端对话的合作平台，同时全面展示中印尼经贸合作的深度与广度，通过合作携手，两国能够在更广阔的领域实现互利共赢，并共同应对全球经济的挑战。

## 日程安排

布展时间:2025年5月13日-14日

展出时间:2025年5月15日-17日

撤展时间:2025年5月17日 16:00

## 同期活动

印尼能源转型合作论坛

中印尼煤炭供应链暨煤炭化工合作大会

中印尼可再生能源产业合作大会

中印尼煤机、矿机及零部件采购对接会

中印尼煤炭能源行业深度商务考察

## 展会地点

印尼雅加达国际展览中心

## 展会规模



展示面积  
**20000**平方米



参展企业  
**500+**



专业观众预计  
**20000+**

# Exhibition Overview

## Indonesia International Coal and Energy Industry

As one of the fastest-growing economies in the world, energy demand and coal consumption in Southeast Asia continues to grow. Indonesia is the initiator of the "21st Century Maritime Silk Road" and a pioneer in the joint construction of the "Belt and Road". Meanwhile, Indonesia, the largest economy in Southeast Asia, is also one of the world's major coal producers and exporters, and one of China's major sources of coal imports. In recent years, the relationship between China and Indonesia has maintained a strong development momentum, marking a new stage in the joint construction of a China-Indonesia community with a shared future. Energy cooperation, especially the coal industry, plays an important role in the economic and trade cooperation. With the growing economic and trade ties between China and ASEAN and the continuous deepening of comprehensive strategic cooperation between China and Indonesia, the prospects for cooperation in the coal and energy sector will become extremely broad. In order to fully display the cutting-edge achievements, advanced technologies, cutting-edge equipment, high-quality projects, and innovative products of the coal and energy industries in Indonesia and China, and to further promote economic and trade exchanges and cooperation in the coal and energy sectors, to drive the transformation and upgrading of the coal and energy industries in Southeast Asia. With the support of the Indonesian Ministry of Energy and Mineral Resources, the Indonesia International Coal and Energy Expo 2025 (hereinafter referred to as ICEE 2025) will be held from May 13 to 17, 2025, at the Jakarta International Expo Center in Indonesia. ICEE 2025 will focus on the latest development results and cutting-edge technologies of global coal and energy, large-scale equipment and intelligent integrated solutions for the coal and energy and chemical industries to build a platform for exhibition and exchange, resource sharing and high-level dialogue. At the same time, it will comprehensively showcase the depth and breadth of economic and trade cooperation between China and Indonesia. Through cooperation and joining hands, the two countries can achieve mutual benefit and win-win results in broader fields, and jointly deal with the challenges of the global economy.

### Exhibition Schedule

Move-in Time: May 13-14, 2025

Exhibition Time: May 15-17, 2025

Move-out Time: 16:00 on May 17, 2025

### Concurrent Events

Indonesia Energy Transition Cooperation Forum

China-Indonesia Coal Supply Chain & Coal Chemical Cooperation Conference

China-Indonesia Renewable Energy Industry Cooperation

China-Indonesia Coal Machinery, Mining Machinery, and Components Procurement

Matchmaking Meeting

China-Indonesia Coal Energy Industry In-depth Business Study Tour


### Venue

Jakarta International Expo Center,  
Indonesia

### Exhibition Scale

 Exhibition Area  
**20,000**  
square meters

 Exhibitors  
**500+**

 Professional Visitors  
**20,000+**

博览会将集中展示煤炭能源行业前沿成果、先进技术、尖端装备、优质项目、创新产品。

### 1.主宾城展区

印度尼西亚、中国煤炭大省(市)或能源城市煤炭及能源领域发展成果、典型经验、先进技术、创新产品等。

### 2.企业品牌展区

世界知名煤炭企业、能源企业、高端能化企业等形象展示。

### 3.技术装备展区

煤矿智能化及安全生产、工程机械及矿业装备等。

### 4.运输车辆展区

各种类型商用车及牵引车、重卡、中卡、轻卡等。

### 5.新能源新材料展区

太阳能光伏,氢能、储能等。

### 6.能源化工产业链展区

煤炭洗选、加工利用,煤炭清洁高效利用,煤化工等。



# Exhibition Ranges

Indonesia International Coal and Energy Industry

The Expo will focus on displaying cutting-edge achievements, advanced technology, cutting-edge equipment, high-quality projects and innovative products in the coal and energy industry.

## 1. Main Guest City Exhibition Area

Main Guest Development achievements, typical experiences, advanced technologies, and innovative products in the coal and energy sectors of Indonesia, China's major coal-producing provinces (cities), or energy cities.

## 2. Enterprise Brand Exhibition Area

World-renowned coal, energy, and high-end chemical companies' image display

## 3. Technology and Equipment Exhibition Area

Coal mine intelligence and safety production, construction machinery and mining equipment, etc.

## 4. Transportation Vehicles Exhibition Area

Various types of commercial vehicles, tractors, heavy trucks, medium trucks, and light trucks.

## 5. New Energy and New Materials Exhibition Area

Solar photovoltaic, hydrogen energy, energy storage, etc.

## 6. Energy and Chemical Industry Chain Exhibition Area

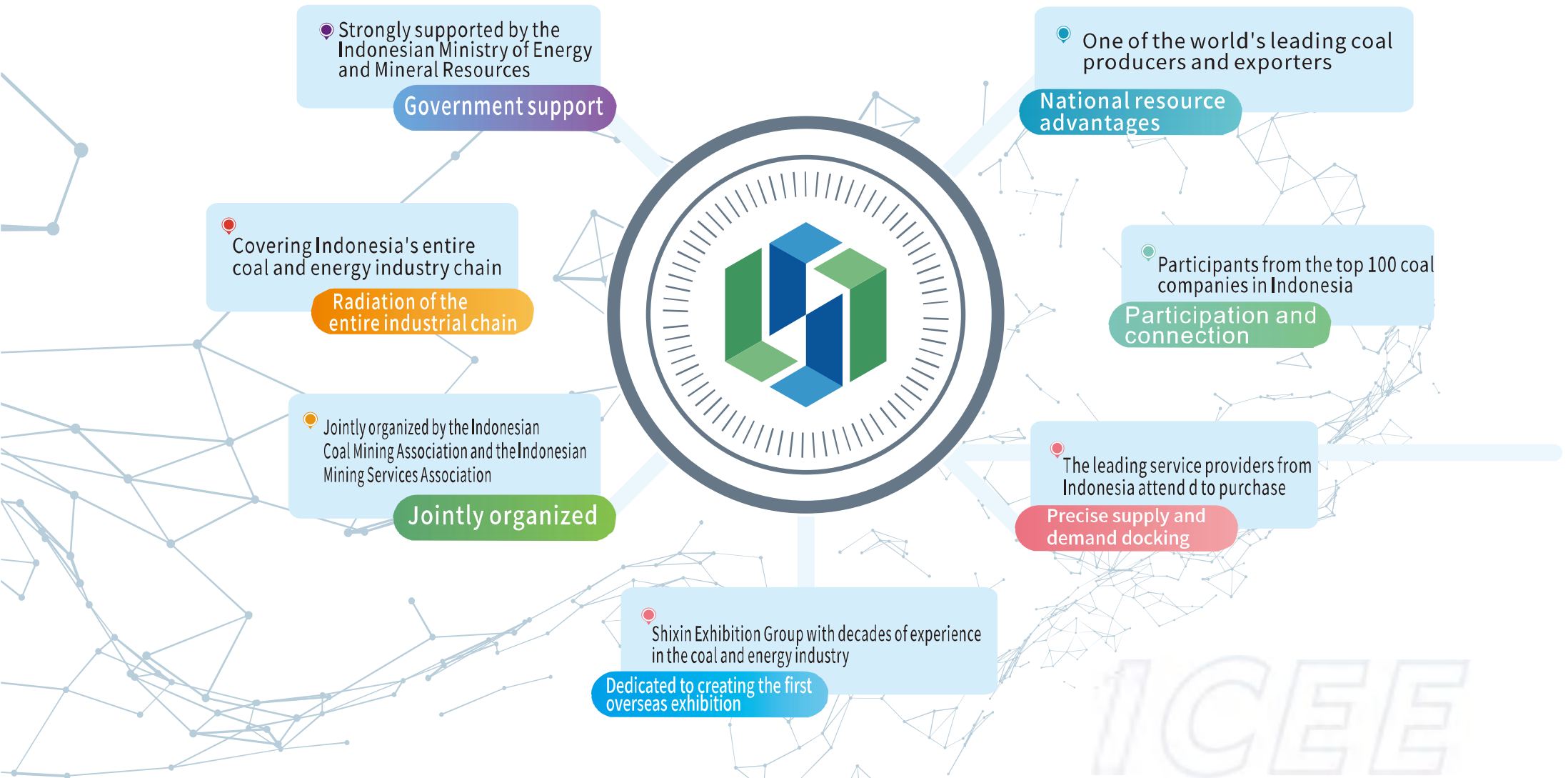
Coal washing, processing and utilization, clean and efficient utilization of coal, coal chemical industry, etc.





# Exhibition Highlights

Indonesia International Coal and Energy Industry



ICEE

### 印尼国家概况

**地理位置与面积:**印度尼西亚位于东南亚，横跨赤道，是一个位于东南亚和大洋洲之间的群岛国家，领土由17,000多个大小岛屿组成，总面积达到1913578平方公里，是世界上面积第14大的国家。

**人口与民族:**印度尼西亚的人口约为2.76亿，是世界上第四人口大国。国内有数百个不同的民族，其中爪哇族占比最大，约45%。

**语言与宗教:**印度尼西亚的官方语言为印尼语。大约87%的人口信奉伊斯兰教，使印度尼西亚成为世界上穆斯林人口最多的国家。

**政治体制与经济:**印度尼西亚是一个总统制的共和国，总统为国家元首、行政首脑和武装部队最高统帅。印度尼西亚是东南亚最大的经济体之一，拥有丰富的自然资源和多样化的产业结构。

**文化与社会:**印度尼西亚的文化深受其多元民族和宗教的影响，具有独特的传统艺术、音乐和舞蹈。同时，作为一个发展中国家，印度尼西亚在教育、卫生和社会保障方面面临诸多挑战，但政府正在努力改善这些领域的服务。

### 自然资源丰富, 尤其以矿产和煤炭资源著称

#### 煤炭资源

印度尼西亚是全球最大的动力煤出口国之一，拥有丰富的煤炭储量。这些煤炭主要分布在苏门答腊和加里曼丹等地区，为当地经济提供了重要的支撑。

#### 镍矿与锡矿

印尼的镍矿和锡矿资源也十分丰富，尤其是镍矿，在全球市场中占据重要地位。这些矿产资源主要分布在苏拉威西岛等地，对全球不锈钢产业具有重要影响。

#### 铜矿、金矿与铁矿

除了上述矿产外，印尼还拥有大量的铜矿、金矿和铁矿资源。这些矿产资源的开采和利用，不仅为印尼带来了巨大的经济效益，也推动了相关产业的发展。



# Advantages of Indonesia's Mineral Resources

Indonesia International Coal and Energy Industry

## Indonesia Country Profile

**Geography and Area:** Indonesia is located in Southeast Asia, straddling the equator, and is an archipelagic country between Southeast Asia and Oceania. It comprises over 17,000 islands, with a total area of 1,913,578 square kilometers, making it the 14th largest country in the world.

**Population and Ethnicity:** The population of Indonesia is approximately 276 million, making it the fourth most populous country in the world. There are hundreds of ethnic groups within the country, among which the Javanese ethnic group is the largest, accounting for about 45%.

**Language and Religion:** The official language of Indonesia is Indonesian. Approximately 87% of the population adheres to Islam, making Indonesia the country with the largest Muslim population in the world.

**Political System and Economy:** Indonesia is a republic with a presidential system, and the president is head of state, head of the executive, and supreme commander of the armed forces. It is one of the largest economies in Southeast Asia, with abundant natural resources and a diversified industrial structure.

**Culture and Society:** Indonesia's culture is deeply influenced by its diverse ethnic and religions, featuring unique traditional arts, music, and dance. As a developing country, Indonesia faces many challenges in the areas of education, health, and social security, but the Government is working to improve services in these areas.

**Rich in natural resources, especially renowned for its mineral and coal resources.**

### Coal Resources

Indonesia is one of the world's largest exporters of thermal coal, with abundant coal reserves. These coal reserves are mainly located in regions such as Sumatra and Kalimantan and they provide important support to the local economy.

### Nickel and Tin Ore

Indonesia is also rich in nickel and tin ore resources, especially nickel ore, which occupies an important position in the global market. These mineral resources are mainly located in Sulawesi and other regions, and have a significant impact on the global stainless steel industry.

### Copper, Gold and Iron Ore

In addition to the aforementioned minerals, Indonesia also possesses a large amount of copper, gold, and iron ore resources. The exploitation and utilization of these mineral resources not only bring significant economic benefits to Indonesia but also promote the development of related industries.

### 1. 展位收费

展位类型	标准展位 (9m <sup>2</sup> /个)	室内光地 (36m <sup>2</sup> 起订)
国内企业	¥ 36,000元/个	¥ 3,500元/m <sup>2</sup>

注:a.标准展位提供:三面围板、楣板制作、洽谈桌一张、折椅两把、射灯两只、10A插座一个。

b.室内光地只提供光地,不提供任何配置,展商自行负责展位设计与搭建。

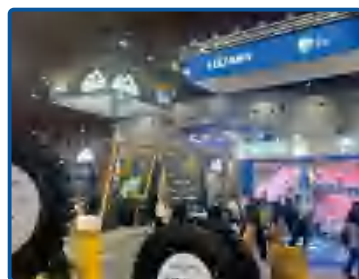
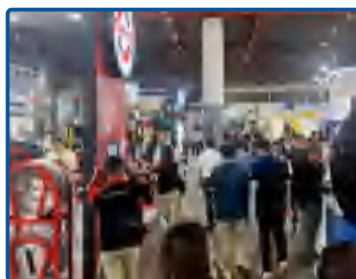
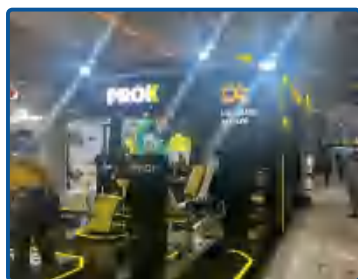
### 2. 展商相关费用

报名费	签证费	人员费
¥ 2,000元/家	¥ 2,000元/人	待定

\*报名费,含国内外通讯费,资料费,进馆证费用等;

\*签证费,填表、预约、材料整理、签证辅导、领馆费用等;

\*人员费,含境外食宿、交通、司导小费、保险等。



### 1. Booth fees

Booth types	Standard booth	Raw space
Domestic Enterprises	¥ 36,000 (9m <sup>2</sup> )	¥ 3, 500/m <sup>2</sup>

Note: a. A standard booth provides: three sides of the board, fabrication of fascia, a negotiation table, two folding chairs, two spotlights, a 10A socket.

b. Indoor raw space only provides the space itself without any equipment, exhibitors are responsible for the booth design and construction.

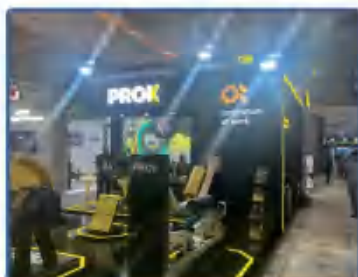
### 2. Exhibitor related expenses

Registration fee	Visa fee	Personnel expenses
¥ 2,000/company	¥ 2,000/person	undetermined

Registration fee, including domestic and international communication costs, material fees, exhibition pass fees, etc.;

Visa fee, including form filling, appointment scheduling, material organization, visa counseling, consulate fees, etc.;

Personnel expenses, including overseas accommodation, transportation, guide tips, insurance, etc.



### 3. 会刊广告

封面	封二	封三	封底	彩色内页 (140mm×210mm)
¥ 50,000元	¥ 20,000元	¥ 20,000元	¥ 30,000元	¥ 6,000元/版

### 4. 其他广告

进馆证	请柬	挂绳	手提袋	现场广告牌 (3m*6m)
¥ 40,000元/万个	¥ 28,000元/万张	¥ 40,000元/万条	¥ 15,000元/千个	¥ 20,000元/块/会期



# Exhibition Advertising

Indonesia International Coal and Energy Industry

## 3. Advertisement on the Catalogue

Front cover	Inside front cover	Inside back cover	Back cover	Inside color pages (140mm×210mm)
¥50,000	¥20,000	¥20,000	¥30,000	¥6,000

## 4. Other advertisements

Admission card	Invitation	Lanyard	Handbag	On-site billboard (3m*6m)
¥40,000/ten thousand pieces	¥28,000/ten thousand sheets	¥40,000/ten thousand strips	¥15,000/thousand pieces	¥20,000/block/session





能源新发展 合作新未来



### 联系方式

姓名: 周琳

手机: 13186138627

邮箱: 735271899@qq.com

18710190703

世信国际会展(印尼)有限公司

地址: Citra Tower Kemayoran 8 Jl. Benyamin Suaeb Kav. A6 Kemayoran, Jakarta Pusat-10630

世信朗普国际展览(北京)有限公司

地址: 北京市海淀区学清路甲38号金码大厦A座9层

网址: <http://ynmbh.pousion.cn>



## New Energy Development, New Future for Cooperation



Contact: Ms. Zhou Lin

Phone: 13186138627

Email: 735271899@qq.com

18710190703

PT Seesion Exhibition Indonesia

Add: Citra Tower Kemayoran 8A Jl. Benyamin Suaeb Kav. A6 Kemayoran, Jakarta Pusat-10630

Shixin Lamp International Exhibition (Beijing) Co., Ltd

Add: 9/F, Block A, Jinma Building, Haidian District, Beijing, China

IP: <http://ynmbh.pousion.cn>